

FranklinWH Floor Mounting Plate

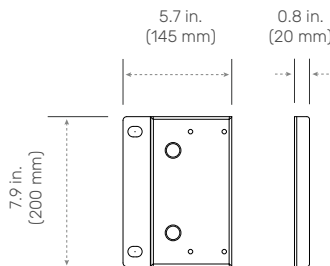
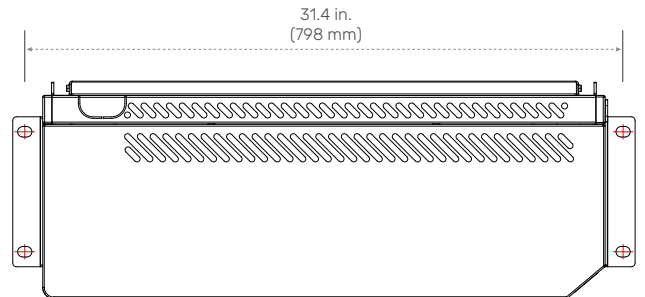
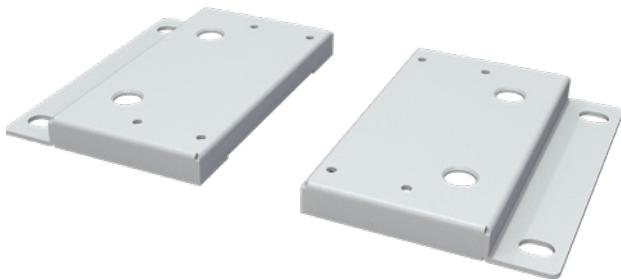


The floor mounting plates are designed to offer a secure and stable solution for safely installing an aPower on the floor. The sturdy construction guarantees long-lasting durability and stability for the installed aPower units. The floor mounting plates are compatible with FranklinWH aPower X, APR-05K13V1-US and APR-05K13V1-AU, adding an element of versatility to the design that enhances convenience and efficiency during the mounting process.

SPECIFICATIONS

Floor mount plate (each unit)	
Weight	2.03 lbs. (0.92 kg)
Dimensions (H x W x D)	7.9 x 5.7 x 0.8 in. (200 x 145 x 20 mm)

Mounting site area	
Mounting size (W x H)	31.4 x 6.3 in. (798 x 160 mm)



Address: 1731 Technology Dr., Suite 530 San Jose, CA 95110 **Telephone:** +1 888-837-2655 **Email:** info@franklinwh.com **Website:** www.franklinwh.com

Copyright 2024 FranklinWH Energy Storage Inc. All rights reserved. The Franklin logo, FranklinWH, and other trademarks or service names are the trademarks of FranklinWH Energy Storage Inc. The document is for informational purposes only, data subject to change. 2024-09-24

