

SnapDeck

Quick Installation Guide

The FranklinWH Lifting Dolly may be used for installations of other products. Some installers use the SnapDeck addition on other dollies. FranklinWH has worked with SnapDeck to provide this option to installers who service multiple brands. Please consult the installation manuals of the respective products for proper usage and safety instructions.



Important:

SnapDeck is **not** required and should **not** be used when installing FranklinWH aPower units with the FranklinWH Lifting Dolly.

The SnapDeck is designed to be attached to the FranklinWH lifting dolly for transporting and mounting loads at the installation site. A minimum of three qualified installers is required to ensure safe handling. Read and follow all the instructions in this guide.

Specifications

SnapDeck Dimensions	18.4 × 10.9 × 1.5 in. (467 × 278 × 38.5 mm)
SnapDeck Weight	8.8 lbs. (4 kg)
Total Maximum Weight Capacity	331 lbs. (150 kg)
Warranty	1 Year

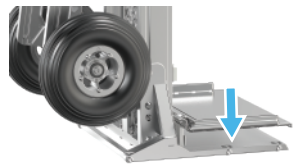
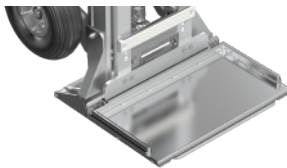
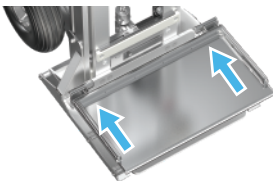
Safety & Operation Instructions

- The SnapDeck must not be used if any visible abnormalities are observed, including significant deformation, broken welds, or cracks/tears.
- Carefully handle and position the SnapDeck to avoid pinching, crushing, or cutting injuries.
- During SnapDeck installation or operation, keep hands and feet clear of the area under the SnapDeck. Never place any body parts beneath it.
- The SnapDeck is designed exclusively for use with the FranklinWH Lifting Dolly. FranklinWH shall not be held liable for any damage or accidents resulting from its use with other carts/products or standalone operation.
- Remove the SnapDeck during FranklinWH aPower transport and installation, as it is not compatible with the aPower.

Installation Procedure

Step 1 Install the SnapDeck

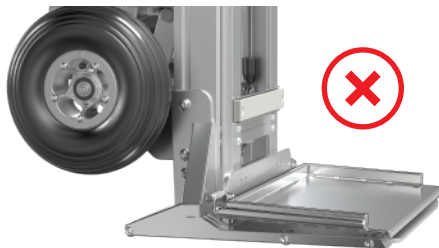
1. Lower the FranklinWH dolly's lifting plate to its base position.
2. Align the SnapDeck and snap it onto the horizontal beam of the lifting plate until both left and right sides are fully engaged.
3. Press down to seat the SnapDeck flush against the lifting plate.



Note:

Installation with the lifting plate in the raised position is strictly prohibited.

Ensure complete contact between the SnapDeck and lifting plate. Never operate the dolly if any portion of the SnapDeck remains unseated or tilted.



Step 2

Load the Equipment

One installer stabilizes the dolly by holding the dolly handle. Two additional installers lift and position the equipment onto the SnapDeck.

Make sure the lifting plate and SnapDeck are centered under the equipment.

Note:

The dolly shall be always stabilized by a designated operator. Leaving the dolly unattended may cause dolly movement, creating potential hazards.



Step 3

Secure for Transport

Securely fasten the battery using the provided safety strap before transportation or lifting operations.

Refer to the **FranklinWH Lifting Dolly User Manual** for instructions on moving, loading, and unloading operations.



After-Installation Notifications

- During travel to and from a site, the SnapDeck must be placed separately and should never be installed on the dolly.
- When the SnapDeck is not in use, it must be stored independently in a dry indoor location, and it is strictly prohibited to place it in environments exposed to rain, moisture, acids, alkalis, or any other corrosive conditions, or to subject it to compression.
- The SnapDeck has a maximum lifespan of 2 years. Dispose of it after expiration and cease usage. Operation beyond the rated lifespan is strictly prohibited.

Address: 1731 Technology Dr., Suite 530 San Jose, CA 95110 **Telephone:** +1 888-837-2655 **Email:** info@franklinwh.com **Website:** www.franklinwh.com

Copyright 2025 FranklinWH Energy Storage Inc. All rights reserved. The Franklin logo, FranklinWH, and other trademarks or service names are the trademarks of FranklinWH Energy Storage Inc. The document is for informational purposes only, data subject to change. 2025-07-09

